



Cambridge International AS & A Level

GEOGRAPHY

9696/11

Paper 1 Core Physical Geography

May/June 2023

INSERT

1 hour 30 minutes

INFORMATION

- This insert contains all the resources referred to in the questions.
- You may annotate this insert and use the blank spaces for planning. **Do not write your answers** on the insert.



This document has **4** pages.

Fig. 1.1 for Question 1

The velocity of flow that erodes, transports and deposits sediment in a river channel

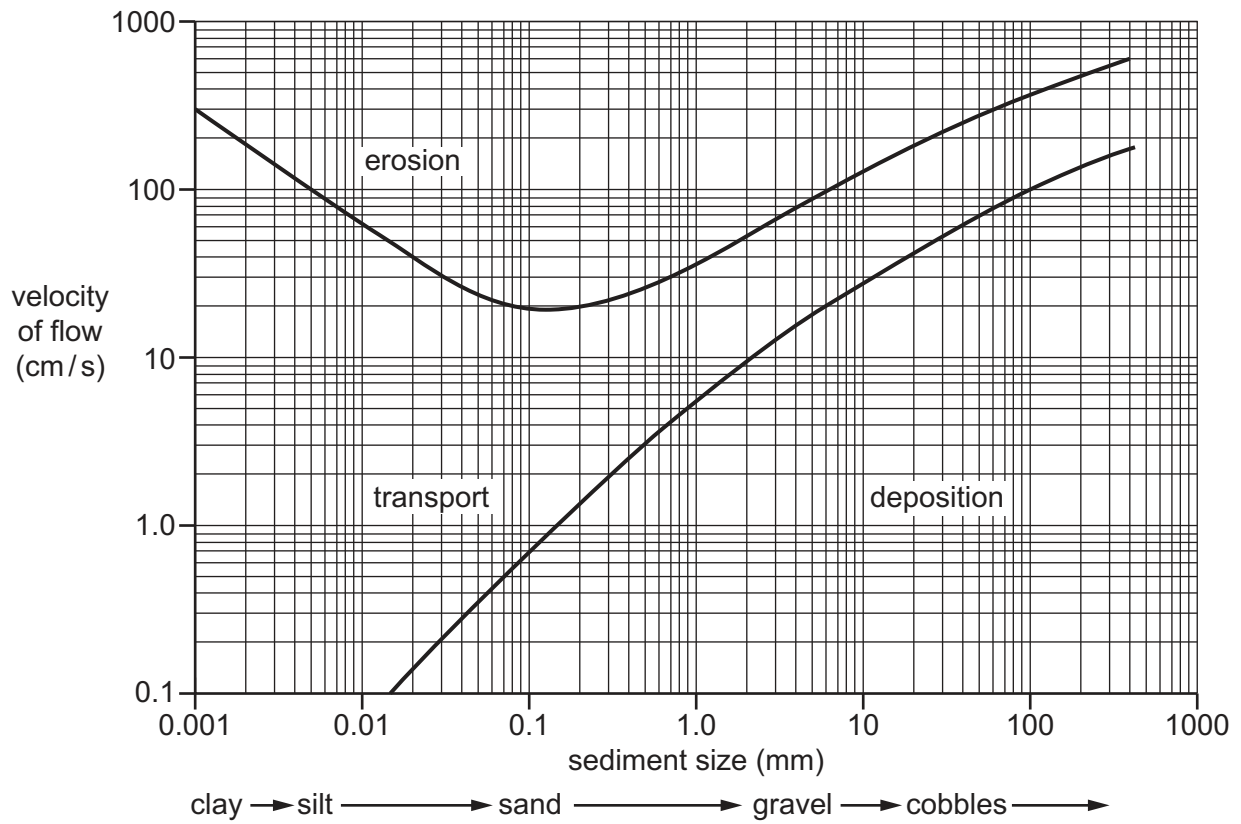


Fig. 2.1 for Question 2

The state of water on two different surfaces on a winter day, in England, UK



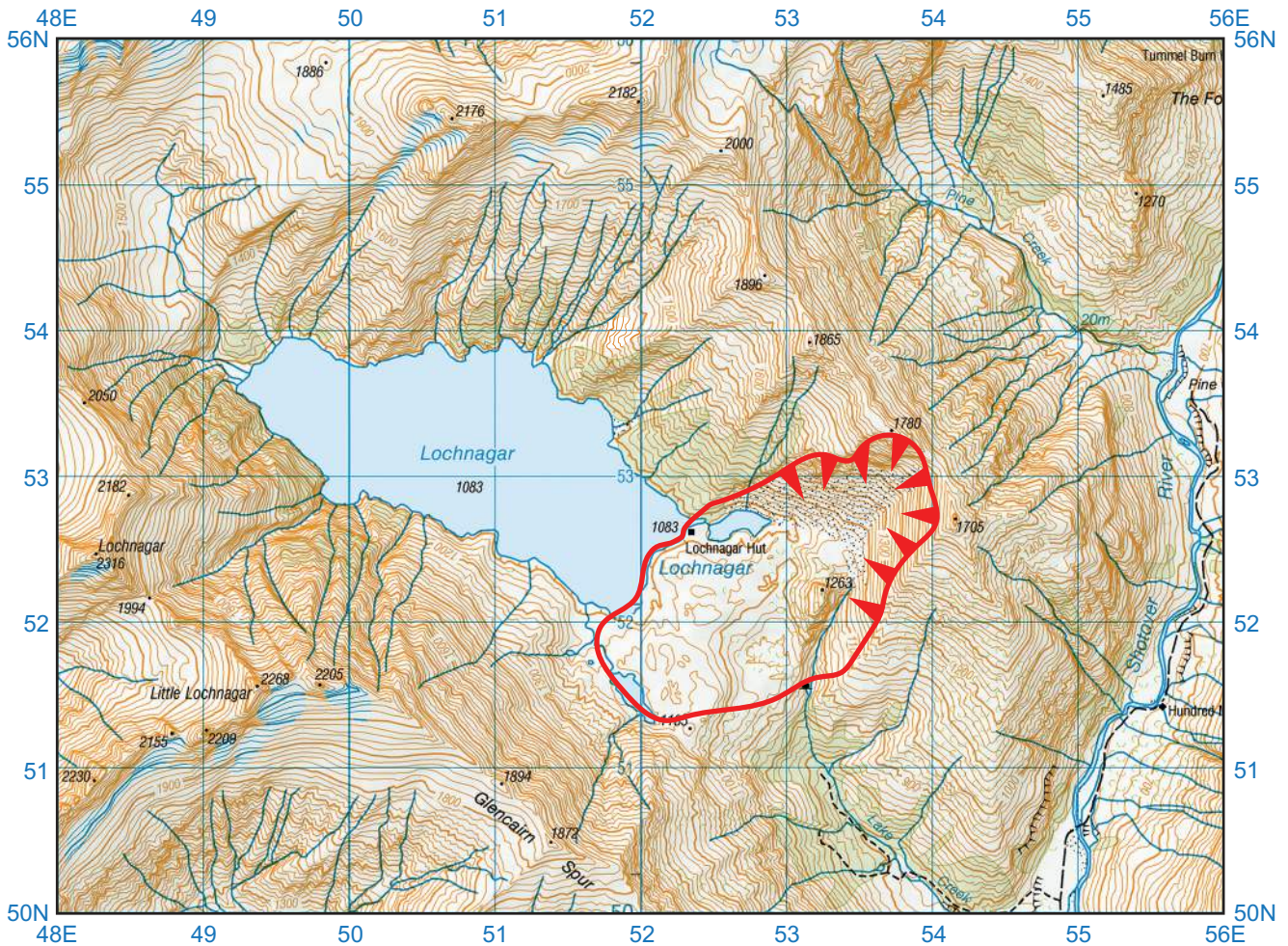
The boundaries and names shown, the designations used and the presentation of material on any maps contained in this question paper/insert do not imply official endorsement or acceptance by Cambridge Assessment International Education concerning the legal status of any country, territory, or area or any of its authorities, or of the delimitation of its frontiers or boundaries.

Permission to reproduce items where third-party owned material protected by copyright is included has been sought and cleared where possible. Every reasonable effort has been made by the publisher (UCLES) to trace copyright holders, but if any items requiring clearance have unwittingly been included, the publisher will be pleased to make amends at the earliest possible opportunity.

To avoid the issue of disclosure of answer-related information to candidates, all copyright acknowledgements are reproduced online in the Cambridge Assessment International Education Copyright Acknowledgements Booklet. This is produced for each series of examinations and is freely available to download at www.cambridgeinternational.org after the live examination series.

Cambridge Assessment International Education is part of Cambridge Assessment. Cambridge Assessment is the brand name of the University of Cambridge Local Examinations Syndicate (UCLES), which is a department of the University of Cambridge.

Fig. 3.1 for Question 3
A map of Lochnagar, South Island, New Zealand



SCALE 1:50 000

THE VERTICAL INTERVAL BETWEEN THE CONTOURS IS 20 METRES



Key

- area of landslide
- head (top) of landslide

ROADS AND TRACKS

- Vehicle track
- Foot track

RELIEF FEATURES

- Index contour
- Intermediate contours
- Perennial snow and ice contours
- Elevation in metres 130m +130
- Cliff, terrace, slip
- Rock outcrops
- Alpine features
 - Moraine
 - Moraine wall
 - Scree

WATER FEATURES

- Waterfall, rapids
- Watercourse

VEGETATION FEATURES

- Native forest
- Exotic coniferous forest
- Exotic non-coniferous forest
- Scrub
- Scattered scrub